

## LANDSCAPE CHARACTER ASSESSMENT OF POTENTIAL SETTLEMENT GROWTH OPTIONS IDENTIFIED IN THE LANDRAKE NEIGHBOURHOOD DEVELOPMENT PLAN

### SITE A – West Lane IMAGES



**By James Evans BA(Hons) AssocRTPI**

Assessment date: 26 <sup>th</sup> June 2017	Landscape Character Area number (s):
Assessor: James Evans	CA22 - South East Cornwall Plateau
	CA25 – Lynher and Tiddy River Valleys
Development type: Residential	Location of development site:
	West Lane, Landrake

Map showing the Location and Orientation of the Images Presented in the Assessment

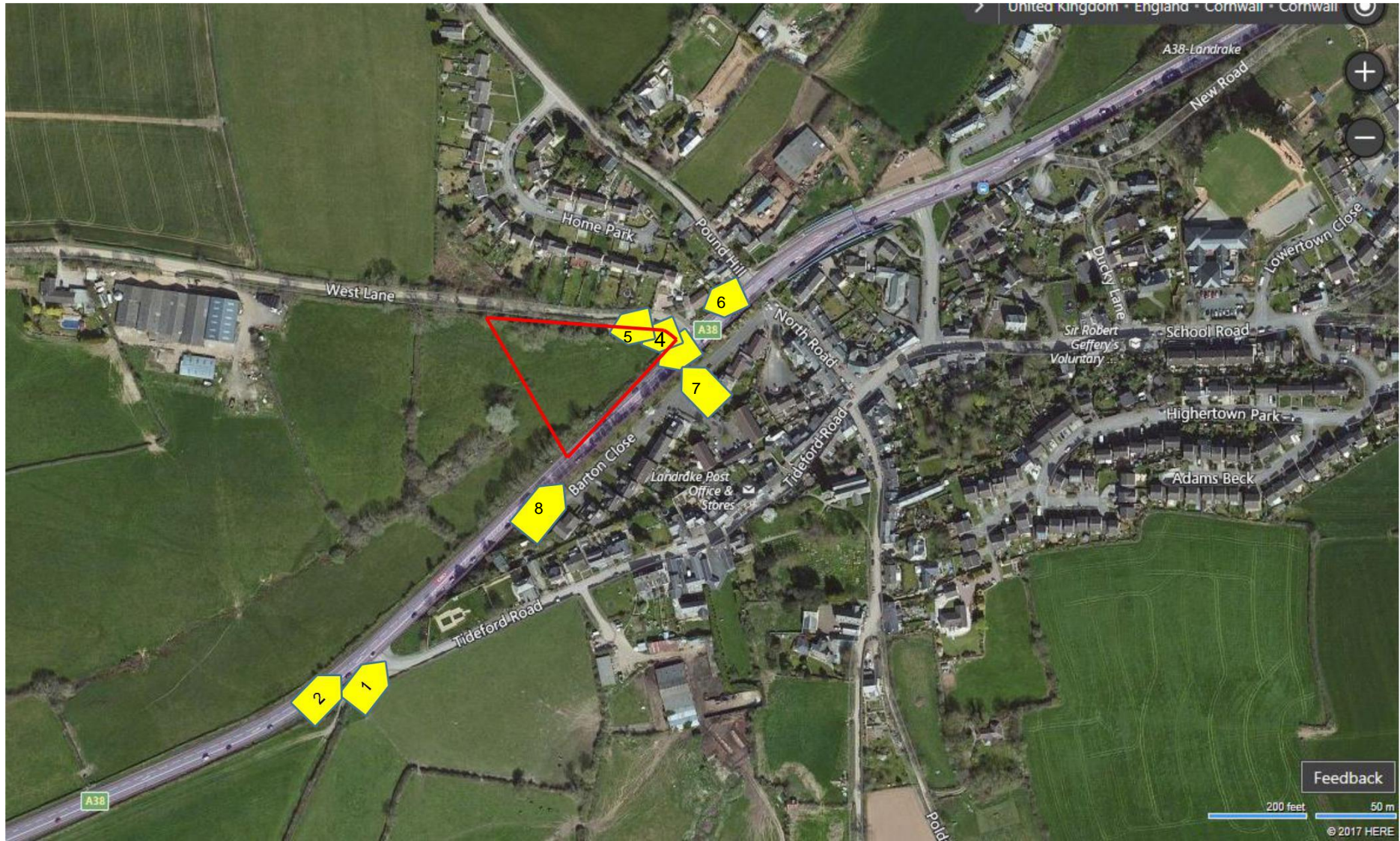




Image 1: Image from the eastern side of the A30 looking northwards, the site is centrally in the image behind the boundary coverage



Image 2: Further image from the eastern side of the A30 looking northwards, the image was taken further to the south from Image 1.



Image 3: Image from the north-eastern corner of the site looking southwards along the sites eastern boundary which adjoins the A38.



Image 4: Image from the same location as Image 3 but looking towards the south-west across the site, note the tree belt running in the centre of the image which represents to lower boundary of the site.



Image 5: Image as per location of Images 3 and 4 but looking westwards along the sites northern boundary.



Image 6: Image looking southwards from the footpath adjoining the A38 and across entrance to West Lane. The existing site entrance and location for Images 3 to 5 is where the yellow banner is displayed.



Image 7: From Google Streetview looking directly towards the West Across the site.



Image 8: From Google Streetview looking to the north-west, the site is visible behind the speed camera.